

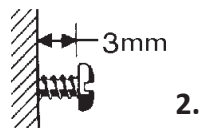
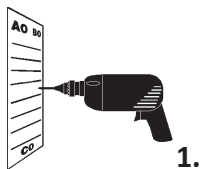
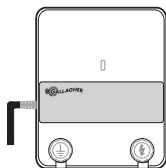
## 4-STEP INSTALLATION GUIDE

### Step 1. Mount the Energizer

The energizer is easy to install. Mount the energizer on a wall, under cover, out of reach of children, adjacent to a power outlet.

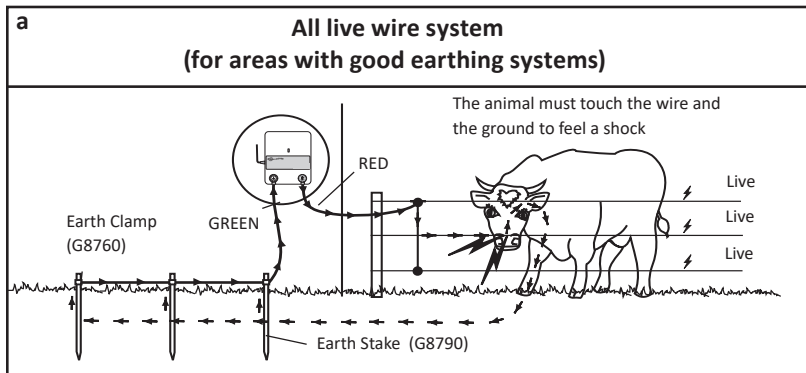
Install where there is no risk of the energizer incurring fire or mechanical damage.

1. Using the the template on the centre page as a drilling guide, drill 2 x 4mm (5/32") holes 176mm apart (A & B).
2. Fix the screws provided into the wall leaving the head of the screw about 3mm ( $1/8$ " ) out from the wall.
3. Place the energizer over and slide down onto the mounting screws.

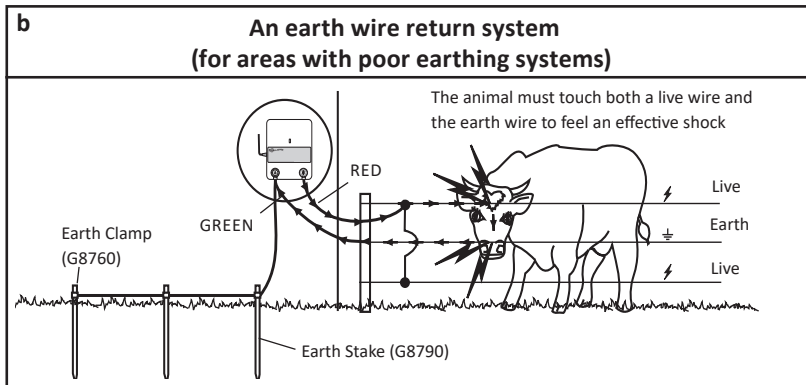


## Step 2. Install the earth system

Buildings and gates for example, can become electrified with fence voltages if the energizer is improperly earthed. Follow earthing instructions carefully.



The most effective place for an earth system is in continuously damp soil, see illustration a. For dry areas with poor earthing conditions, see illustration b.



Install the earth system at least 10m (33ft) from any power supply earth peg, underground telephone or power cable. Drive one 2m (6ft) earth stake into the ground, until only 5cm (2") remain above the ground.

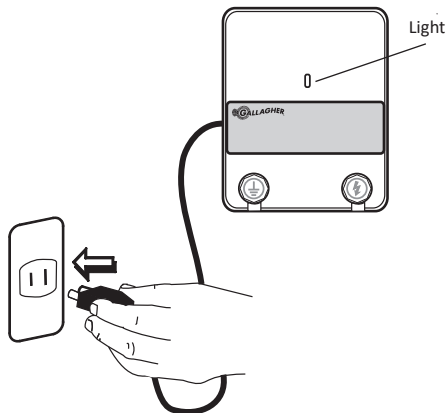
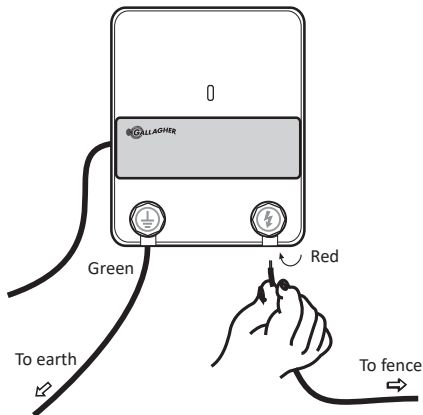
**Note:** Poor grounding can cause interference on telephone lines, radios and televisions. This can be recognised by a clicking sound on telephones.

### Step 3. Connect the fence

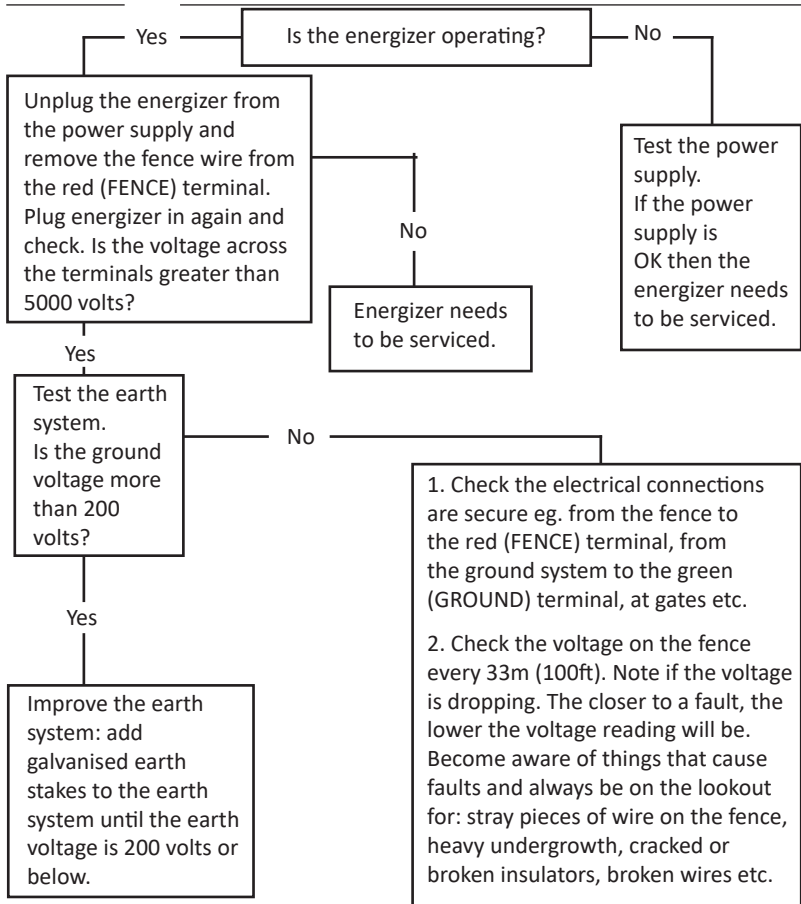
Connect the energizer's red (FENCE) terminal to the fence using double insulated cable. Remove 5cm (2") of plastic coating from one end of the cable. Bend the end of the wire to form a loop. Unscrew the red (FENCE) terminal and insert the loop of wire. Screw the terminal closed, ensuring the wire is firmly clamped. Attach the other end of the cable to the fence using a joint clamp.

### Step 4. Plug the energizer into a power outlet

Check that the light on the front of the energizer is flashing.



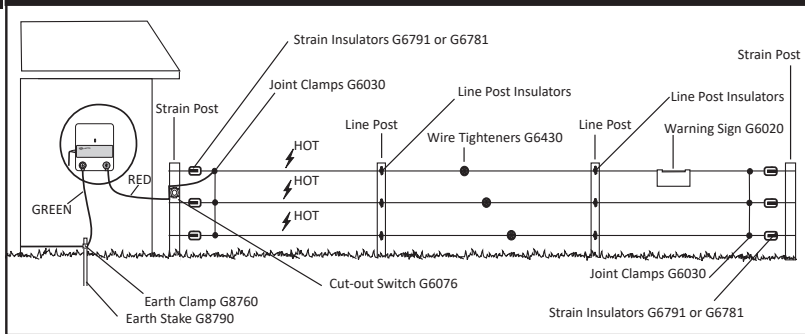
# VOLTAGE CHECKLIST



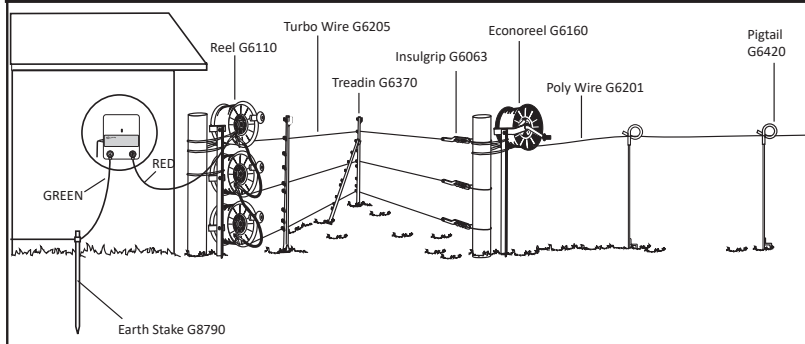
# MATERIALS AND TOOLS

Gallagher dealers offer a complete range of products for your power fence.

## Permanent Fence



## Portable Fence



For fence specifications and design contact your Gallagher dealer.